

COVID-19 impact on care and prescribing for inflammatory bowel disease: Data from the IBD Registry



Keith Bodger, Stuart Bloom, Liz Dobson, Fraser Cummings, Stephen Grainger & Nicholas Kennedy on behalf of the UK IBD Registry Collaboration

Comparison of two time periods



Pre-COVID
April-May-June 2019

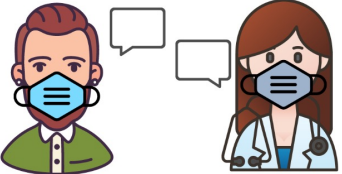
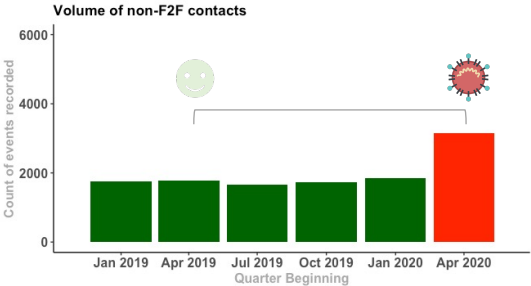
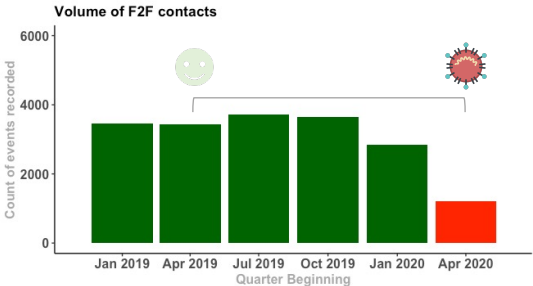
versus



Post-COVID
April-May-June 2020

Analysis of records submitted for adult patients, aggregated by quarter

Types of clinical contact



Face-to-Face

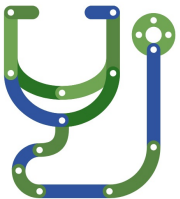
-65%



Non-Face-to-Face

+78%

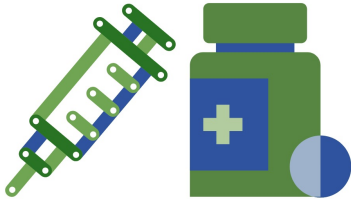
New diagnoses



-74%

Rates were calculated as the number of new diagnoses per 1,000 contacts during each quarter of interest

Prescribing



Prednisolone -20% **Thiopurines -81%** **Biologics -38%**

Rates were calculated as the number of medication records (start dates) per 1,000 contacts during each quarter of interest